

Reliable Companion

for global

Public-Private Partnership

(PPP) business



KIND is an organization established by the government of the Republic of Korea to proactively support global Public-Private Partnership (PPP) business.



CEO's message

Since the world is facing drastic climate changes and rapid urbanization today, the need for infrastructure investment is emerging greater than ever with the gap between infrastructure demand and supply hardly to be filled in the near future. The highest priority, therefore, has been attached to infrastructure investment not only in Korea but also in other numerous countries on this globe.

KIND is now ready to serve as a facilitator for efficient Public-Private Partnership ("PPP") projects worldwide, collaborating with various global PPP players to help fill such gap.

As required in each of our partner countries, KIND will devise and customize its way of support so that Korea's rich experiences and technical expertise of private and public sectors could be fully channeled into the entire process of PPP project development including project identification, project structuring, construction, O&M, and finance. This KIND way of support will also ensure economically, environmentally and socially viable development, thereby creating a virtuous circle of sustainable growth of partner countries.

In this ever-growing global infrastructure market, KIND will exert the utmost endeavor to integrate and maximize our capacities together with our potential partners. As a team, we will be able to promote more successful PPP projects in the days to come.

We look forward to partnering with you.

Korea Overseas Infrastructure & Urban Development Corporation
President & CEO **Kyong-goo Hur**

Established in June 2018,
with the long-cherished wish of
Korean construction industry

Our Mission

Support global
infrastructure and
urban development for
sustainable growth



Our Vision

Reliable companion
for global
infrastructure
development

Our Goals

- Actively participate in
global PPP projects
- Build up KIND's
brand value
- Ensure future growth
sustainability



Main Business

KIND is an organization that provides comprehensive support for Korean companies to expand their overseas PPP investment and development business activities.

KIND will play the role of supporting the overall aspects of businesses, from identifying projects and supporting project development and finance to making direct investments.



Project Identification

We identify PPP business opportunities by systematically managing overseas information, analyzing policies of partner countries and utilizing G2G cooperation.

- Secure quality information through G2G cooperation and networks with partner governments, identifying business opportunities
- Make business proposal to partner governments based on researches and strategies taking into consideration of the economic and social conditions of each country



Project Development

We assist Korean companies in designing project structures by supporting feasibility studies, using expertise in finance, law, and technology.

- Prior to feasibility studies, preliminarily review the viability of projects based on technical, financial and legal expertise, and closely monitor the project development process to secure project success potentials
- Review legal and contractual risks of projects in advance in order to prevent problems that may arise when implementing projects
- Design project structures by taking financing into account and prepare for conditions that would satisfy the requirements from other financing partners, such as ECA and MDB

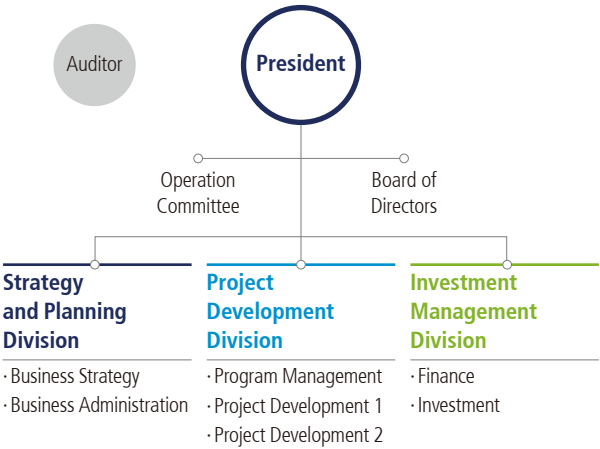


Financial Support

We arrange loans and overseas PPP investment funds, and if necessary make direct equity investments to alleviate the private sector's financial burdens

- Support credit enhancement for projects by directly making equity investments as necessary
- Link various financing tools to projects via networks with global financial institutions
- Provide financial structuring optimized for the characteristics of each project

Organization



Main Operations

Organization		Tasks
Strategy and Planning Division	Business Strategy	<ul style="list-style-type: none"> · Establish medium to long-term strategies and plans and manage business operation plans · Collect and analyze information about new business opportunities · Develop overseas network for cooperation · Identify business opportunities through G2G · Manage Project Selection Committee
	Business Administration	<ul style="list-style-type: none"> · Manage personnel affairs and organization · Manage accounting and financing · General affairs
Project Development Division	Program Management	<ul style="list-style-type: none"> · Conduct primary internal review of projects · Review project development schemes for each development phase, including feasibility studies and supports for financing
	Project Development 1	<ul style="list-style-type: none"> · Develop projects and conduct technical reviews (The main areas include urban development, transportation and distribution (port)) · Manage feasibility studies · Provide other proper supports for each project
	Project Development 2	<ul style="list-style-type: none"> · Develop projects and conduct technical reviews (The main areas include power & energy, environmental, hydrocarbon and industrial plants and water resources) · Manage feasibility studies · Provide other proper supports for each project
Investment Management Division	Finance	<ul style="list-style-type: none"> · Conduct internal financial & legal review of each selected project · Provide financial advice and arrange loans
	Investment	<ul style="list-style-type: none"> · Conduct internal investment review of each selected project · Manage Investment Evaluation Committee and make decisions on equity and bond investments · Issue corporate bonds
Auditor	Audit Team	<ul style="list-style-type: none"> · Audit

Introduction to CI

The “earth” is expressed in gradations to represent various fields of KIND’s support and symbolize the bright future of overseas expansion through the gradation of “blue” and “green”.



Global

Representing the major role of KIND which supports overseas infrastructure and urban developments through the expression symbolizing the ‘earth’



Spread

Symbolizing the powerful influence of KIND, which is expanding toward the world, through the ‘gradation’ effect



Infrastructure

Expressing the determination to provide a strong framework, within which Korean companies may expand overseas, by expressing the framework with ‘bold lines’



Way

Through the spreading “lines”, expressing the bright future of both Korea’s overseas development businesses and partner countries

Korea Overseas Infrastructure & Urban Development Corporation

10, Gukjegeumyung-ro (50Fl. Three IFC), Yeongdeungpo-gu, Seoul,

07326, Republic of Korea Tel. 82-2-6746-7408~09 www.kindkorea.or.kr